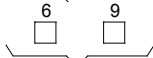


FORM 7256BH

PROTECTOFIER
SINGLE BURNER,AUTO/MANUAL
OPERATION,INCLUDES IGNITION
TRIAL TIMER.

SS100A FLAME PAK

ACF { C-CHECK RELAY
F-FLAME RELAY



NO CONNECTIONS

INTERNAL WIRING
EXTERNAL WIRING

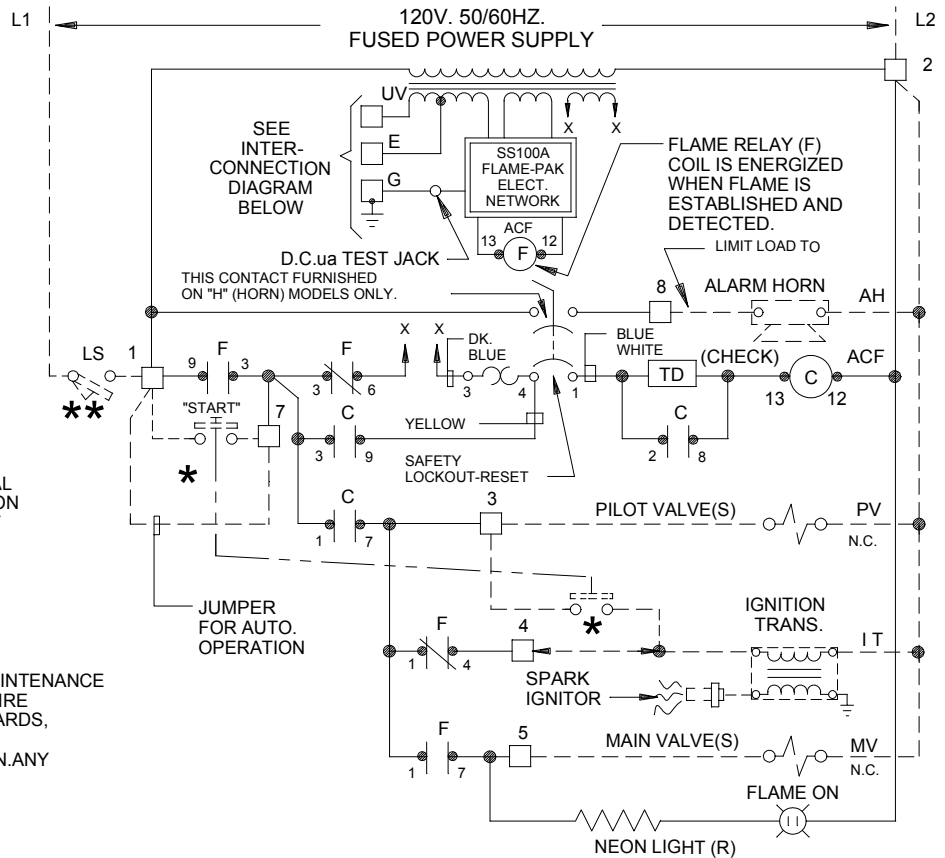
* - PUSHBUTTON SHOWN FOR MANUAL
START. FOR AUTOMATIC OPERATION
OMIT PUSHBUTTON AND CONNECT
JUMPERS AS INDICATED.

** - SAFETY INTLK. SERIES CIRCUIT.
FUEL AND AIR PRESS.SWS.,
VENT, FANS, ETC. AS REQ'D.

NOTES:

INSTALLATION, OPERATION AND MAINTENANCE
SHALL CONFORM WITH NATIONAL FIRE
PROTECTION ASSOCIATION STANDARDS,
NATIONAL AND LOCAL CODES AND
AUTHORITIES HAVING JURISDICTION.ANY
MODIFICATION VOIDS APPROVAL.

WIRING DIAGRAM



NOTES:

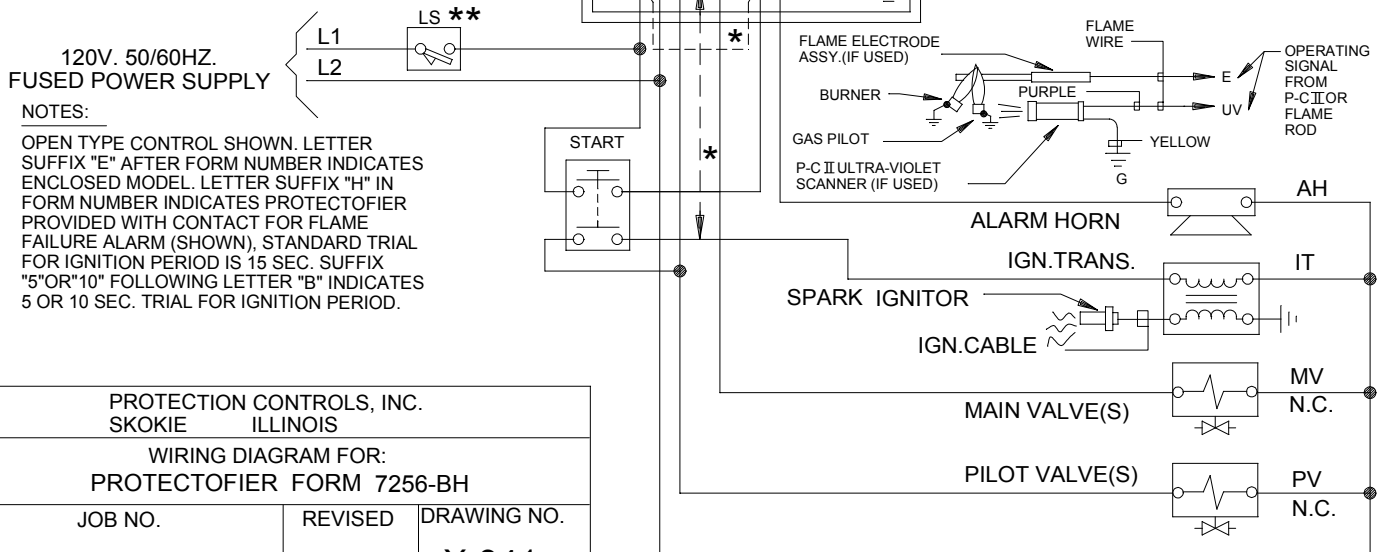
FLAME WIRE TO BE NO. 14 TYPE TW. 600V.
INSULATED WIRE OR EQUAL. FLAME WIRE MUST
NOT BE IN SAME CONDUITS WITH POWER WIRING.

IGNITION CABLE MUST BE RUN IN SEPARATE
CONDUIT TO SPARK ELECTRODE.
(DO NOT MIX WITH 120V.WIRING.)

ALL WIRING AND EQUIPMENT EXTERNAL TO
PROTECTOFIER TO BE FURNISHED BY
OTHERS UNLESS OTHERWISE SPECIFIED.

INTERCONNECTION DIAGRAM

SINGLE BURNER
PROTECTOFIER
(FORM 7256-BH)



PROTECTION CONTROLS, INC.
SKOKIE ILLINOIS

WIRING DIAGRAM FOR:
PROTECTOFIER FORM 7256-BH

JOB NO.

REVISED

DRAWING NO.

6-04

X-341